

Another Bambeck Auctioneers Inc.

AUCTION

- Business Closed -

Corlett Lumber Company
4567 Northfield Road
Warrensville Heights OH 44128



2005 Chevrolet C6500



- Trucks
- Fork Lifts
- Electronic Sign
- New Inventory



Cat 8,000 lb. Lift, 1 of 2

Auction Managed & Conducted By:

BAMBECK AUCTIONEERS
I N C O R P O R A T E D

auctioneers • real estate brokers • appraisers
3061 Steel Road NW, Dover, Ohio 44622 • (330) 343-1437

www.bambeck.com

Saturday

MAY 21

@ 10:00 AM



ELECTRONIC SIGN

Daktronics electronic sign, Model AF-3400-48x128-20-
RGB-2V, installed January 2006, LED color: Red, Green,
Blue. Dimensions of LED Display: 3'8"H x 8'10"W. Overall
dimensions as presently installed: 9'W x 12'8"H

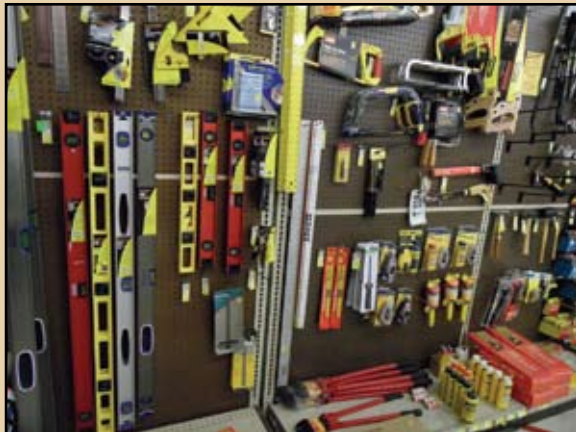
NEW INVENTORY

ASSORTED LUMBER including: 2x4's; 2x6's; 2x8's;
1x4's; 1x6's; 1x8's; 1x10's; 1x12's; Treated 4x4's & 6x6's;
Misc. cedar; 4x8 sheathing (plywood) furring strips, etc.
Plus drywall; trim & mouldings

**TOOLS - HARDWARE - HOME IMPROVEMENT INVEN-
TORY:** Entry doors; storm doors; security doors; door locks;
vanities; toilets; paneling; lawn & garden tools and supplies;
paint & painting supplies; caulking, glues, sealants; roof-
ing materials & supplies; hand tools; carpentry & masonry
tools; large selection hardware; step ladders; plumbing &
electrical supplies; cleaning supplies; MUCH MORE!

MISCELLANEOUS

Milwaukee panel saw • Dewalt radial arm saw • Red Devil
5400 paint shaker • Ilco key cutting machine & blanks
• retail store fixtures • 125' linear feet of pallet racking,
12'H uprights, 9' stepped beams



2005 Chev. C6500



AUCTION

Saturday, May 21

Starting @ 10:00 AM

Corlett Lumber Company

4567 Northfield Road

Warrensville Hts. OH 44128

TRUCKS

2005 Chevrolet C6500 s/a truck w/ 16' flat bed, gas, auto trans., 29995 miles on odometer, VIN: 1GBJ-6C1E45F521018

1996 Ford s/a truck w/ 16' flat bed, gas, 6-sp. manual trans., 094181 miles on odometer, VIN: 1FDNF70J2T-VA13549

2000 Chevrolet 3500 s/a truck w/ 12' flat bed, gas, auto trans., 107091 miles on odometer, VIN: 1gb-jc34r4yf452052

2000 Chevrolet 3500 pickup, auto., 132107 miles on odometer, VIN: 1GCGC34R2YR152272



FORK LIFTS

Caterpillar Model GP40, s/n 1CM-00408, LP gas, 8,000 lb. capacity, 217" lift height, solid cushion tires, 9668 hours on meter •

Caterpillar V80E, s/n 77X1703, LP gas, 8,000 lb. capacity, 162" lift height, solid cushion tires



PAYMENT TERMS: Payment in full upon conclusion of auction by cash or in-state checks. Buyers outside Ohio paying by check must provide a current bank letter guaranteeing payment to Bambeck Auctioneers Inc. See sample letter on web site: www.bambeck.com

NOTE: Although the information contained herein has been obtained from sources believed to be reliable, prospective buyers are encouraged to make their own inspection prior to purchase. Neither the auctioneer nor the seller assume responsibility for errors or omissions in advertising material. All items sell as is, where is. THE EQUIPMENT LISTED HEREIN MAY BE INSPECTED ON MORNING OF AUCTION BEGINNING AT 8:30 A.M.

