

Another Bambeck Auctioneers Inc.

# AUCTION

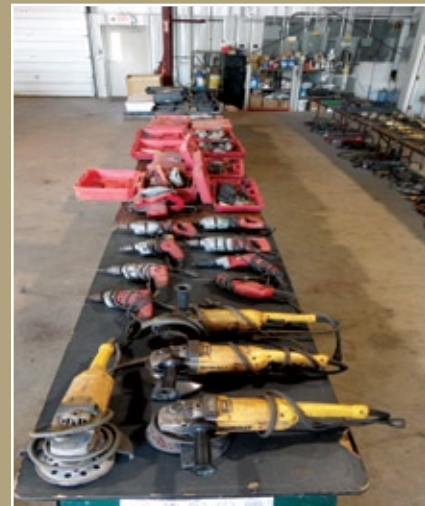
By Order of Secured Party, Equipment & Vehicles of:  
**Chapman Industrial Construction, Inc.**  
5617 Crown Road, Dover OH 44622



2005 Gradall G6-42A



1999 JLG 1932E2



Auction Managed & Conducted By:

**BAMBECK AUCTIONEERS**  
 I N C O R P O R A T E D  
 auctioneers • real estate brokers • appraisers  
 PO Box 549, Dover, Ohio 44622-0549 • (330) 343-1437

[www.bambeck.com](http://www.bambeck.com)

Thursday

**October 18**

**@ 10:00 AM**

## EQUIPMENT - TOOLS:

**2005 Gradall JLG42A (G6-42A)** rough-terrain telescoping fork lift, s/n 0160009223, 3195 hrs. on meter • 1.5 cu.yd. Gradall bucket attachment

**1999 JLG 1932E2** aerial work platform (scissor lift), s/n 0200052802, 500 lb. x 19' capacity

**Yale 6000 lb.** capacity LP gas fork lift, solid cushion tires, 3-stage mast

**WELDING/ CUTTING EQUIPMENT:** **Miller** Trailblazer 302 diesel welder/generator, s/n LG083843, 1388 hrs. on meter • **Miller** Trailblazer 302 diesel welder/generator, s/n LJ220205Q, trailer-mounted, 1000 hrs. on meter • **(2) Miller** Bobcat 225NT welder generators, s/n: LE034098 & LE034100, 1786 & 2201 hrs. respectively, Kohler gas engines • **Miller** Bobcat 250 trailer-mounted welder/generator, s/n LH008457, Kohler gas engine, 1168 hrs. on meter • **Red-D-Arc** D300K 3+3 (Lincoln RA-250-V1902) trailer-mounted welder/generator, s/n 122534AC, Kubota V1902-BG1 diesel engine • **(2) Miller** XMT 304 DC Inverter Arc welders, s/n's: LC132998 & 044947 • **Lincoln** Power Mig 255C welder, s/n U1070704039 • **Hypertherm** Powermax 1000 plasma cutter, s/n 083169 • **Assorted** welding leads • 58"x84" steel welding table • 48"x48" steel welding table • **(7)** oxygen/acetylene carts • **Assorted** hose, gauges, torches •

### INDUSTRIAL LIFTING/RIGGING/CONSTRUCTION EQUIPMENT:

Assorted cable slings to 1.5" dia. • lifting straps • assorted clevises, hooks, wire rope • HD c-clamps • (4) SPX 11-ton hyd. jacks • set 40-ton Hilman rollers • (15) CM puller lever puller hoists, 3/4-1-1/2 ton • (24) manual chain hoists, 1/2-5 ton • (3) hyd. port-a-powers • safety harnesses & self-retracting lifelines • (18) steel Job Boxes

**Ladders - Manual Tools:** Ext. Ladders: (1) 40', (2) 32', (2) 24', (1) 16'; Step Ladders: (2) 12', (6) 10', (10) 8', (4) 6' • Socket wrenches to 1" drive • 1" drive torque wrench • combination wrenches • sledge hammers • spud bars • assorted hand tools

**Corded Power Tools:** (2) magnetic base drill presses • (5) Dewalt 1-9/16" rotary hammers • Milwaukee 1" rotary hammer, portable band saws, Sawzalls, circular saws, drills • (4) Dewalt D28493 angle grinders • (6) Dewalt 1/2 & 3/4" impact wrenches • (25) small angle grinders • (25) Dewalt screwdrivers • (8) Dewalt drills •

**Other Tools, Supplies, Misc.:** Honeywell Lumidor Impact Pro multi gas detector • Pelsue 1450 gas-pwrd. ventilator • Allegro Com-PAX-ial air mover • (2) 36" ventilation fans • assorted power cords • Craftsman 6 hp 30-gal air compressor • fire extinguishers • Tolman TTM-4 rebar cutter/bender • concrete vibrator • assorted manual concrete finishing tools • assorted hardware • strapping outfit • fuel cans • Knaak Weather Guard rack for pickup truck & alum. tool boxes • (3) drums ChemMasters Safe-Cure & Seal 20 • (45) 1-gallon kits of Westec Barrier Technologies WT6751 epoxy gel resin & hardener •

**Cub Cadet** LT1046 lawn tractor, hyd. drive, 76 hrs.. on meter



**2004 Ford  
Welding Truck**



**2006 Ford F250 XL**



**2010 Honda Odyssey**



**2007 Ford F350 XL**



**2005 Gradall G6-42A**

**AUCTION**  
**Thurs., October 18**  
**Starting @ 10:00 AM**  
**Auction Site:**  
**5617 Crown Road**  
**Dover OH 44622**





**Two of Six Portable Welders**



**Yale 6,000 lb Lift**



**Partial View of  
(18) Job Boxes  
(28) Ladders**



**1995 School Bus**

**PAYMENT TERMS:** Payment in full upon conclusion of auction by cash or in-state business check. Buyers outside Ohio paying by business check must provide a current bank letter guaranteeing payment to Bambeck Auctioneers Inc.

## TITLED VEHICLES:

**2007 Dodge** Ram 3500HD stake bed truck, VIN: 3D6WG46DX7G730568, 141968 mi. on odometer, 5.7L Hemi, auto., towing

**2010 Honda** Odyssey EX-L van, VIN: 5FNRL3H71AB042102, 046306 mi. on odometer

**2006 Ford** F250 XL 2WD pickup, VIN: 1FTNF20516EA80657, 149456 mi. on odometer, towing, ladder rack, alum. tool box

**2006 Ford** Freestar Limited van, VIN: 2FMZA582X6BA06236, 129221 mi. on odometer, 4.2L

**2007 Ford** F150 XLT 2WD ext. cab pickup, VIN: 1FTPX12VX7FA56169, 162139 mi. on odometer, 5.4L, towing, bedliner

**2004 Ford** E350 contractors van, VIN: 1FDWE35L64HA70489, 101962 mi. on odometer, auto, Supreme Spartan FRP body, towing, includes Miller Bobcat 250 gas-pwrd. welder/generator

**2007 Ford** F350 XL 2WD utility pickup, VIN: 1FDSF34547EA86632, 072984 miles, Stahl bed, ladder rack, towing

**2001 Dodge** Ram 2500 Laramie SLT 2WD ext. cab pickup, VIN: 3B7KC-23Z01G728971, 214521 miles, V8 Magnum, auto, towing, ladder rack, alum tool boxes

**1995 Ford / Wayne** school bus, VIN: 1FDNB80C6SVA19677



**2007 Dodge Ram 3500HD**



**Hoists - Clevises**



## OFFICE FURNITURE:

12' conference table • (8) leather-style castor chairs • 5-pc. executive office set • black leather-style sofa • (3) U-shape desks • modern desk w/ matching hutch • other desks, chairs, misc. furniture, office items • **Oce** TDS400 wide format printer / scanner

